



RÉSISTANCE DES MATÉRIAUX

TD Transfert

TRACÉS DE DIAGRAMMES DES EFFORTS INTÉRIEURS

Travail demandé

Pour l'ensemble des poutres suivantes :

Question 1 Déterminer le torseur de cohésion.

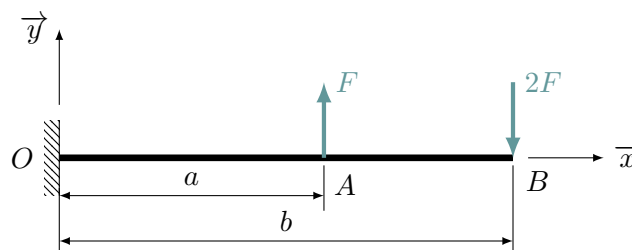
Question 2 Identifier les sollicitations auxquelles est soumise la poutre.

Question 3 Tracer les diagrammes des efforts intérieurs adaptés.

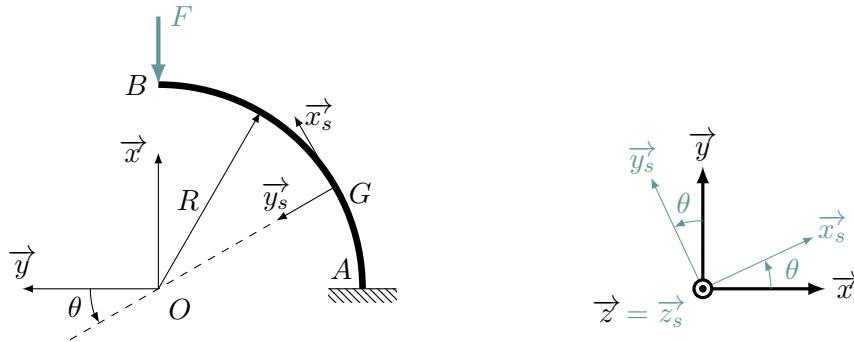
1 Exercice 1



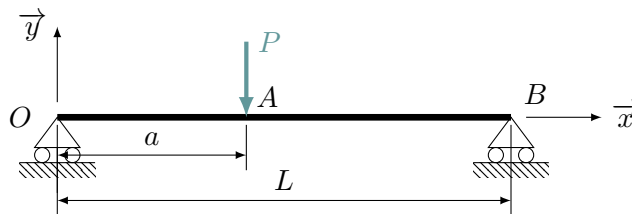
2 Exercice 2



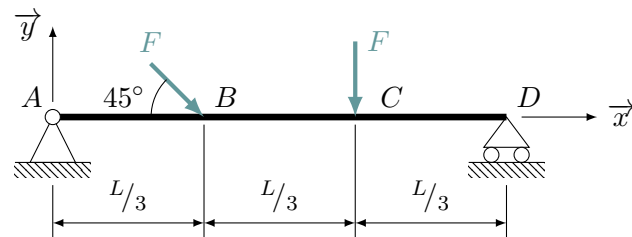
3 Exercice 3



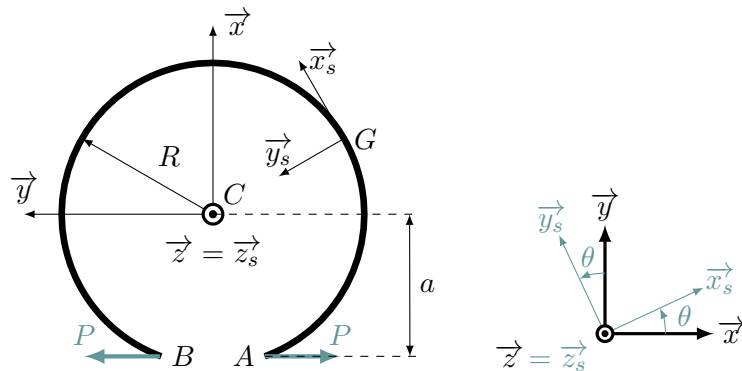
4 Exercice 4



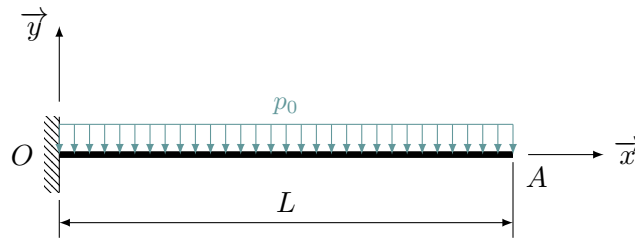
5 Exercice 5



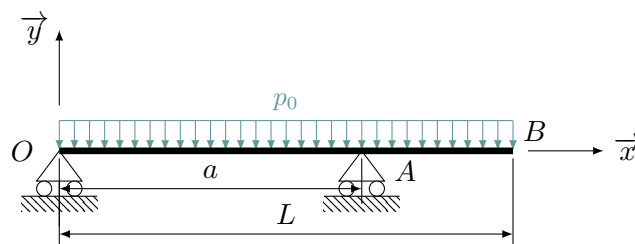
6 Exercice 6



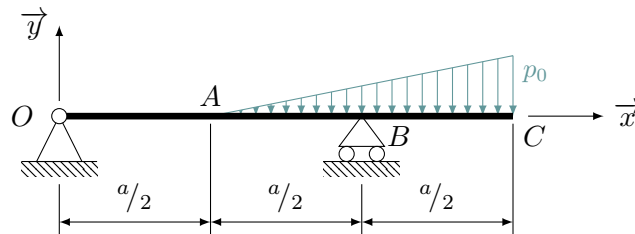
7 Exercice 7



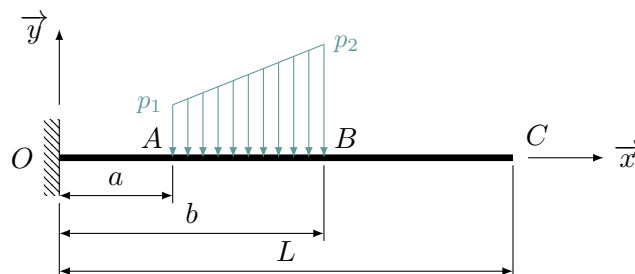
8 Exercice 8



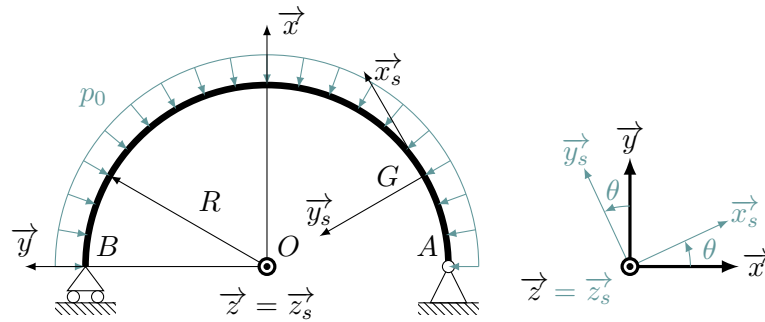
9 Exercice 9



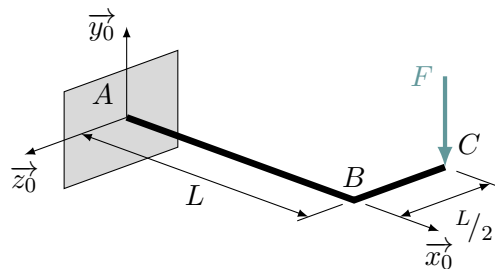
10 Exercice 10



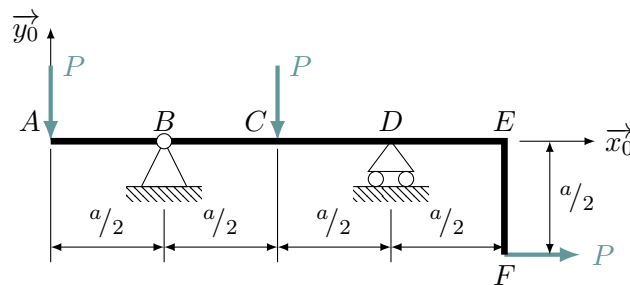
11 Exercice 11



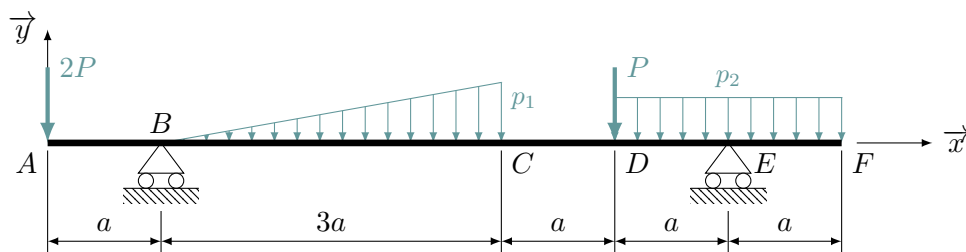
12 Exercice 12



13 Exercice 13



14 Exercice 14



Entre B et C, la poutre supporte une charge $P_1 = 4P$ linéairement répartie. Entre D et F, la poutre supporte une charge uniformément répartie $P_2 = 4P$. Il faudra exprimer les résultats **uniquement** en fonction de a et P .